



GLOBAL DRUG ABUSE CRISIS ***“INSPIRING JOURNEY”***

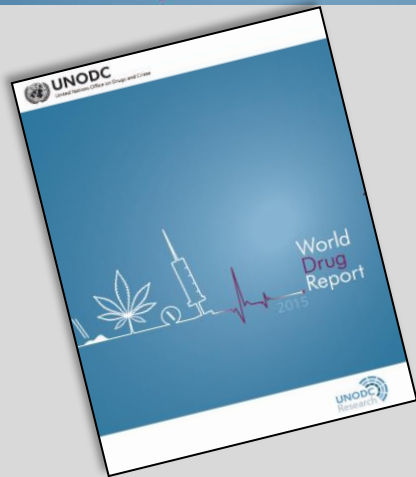
26TH IFNGO WORLD CONFERENCE
16 NOVEMBER 2015

By:
Wan Addenan Wan Mohd Noor
Director Treatment, Medical & Rehabilitation
National Anti-Drugs Agency
Ministry of Home Affairs
MALAYSIA

CONTENTS

- 1** INTRODUCTION
- 2** OVERVIEW OF DRUG SITUATION IN MALAYSIA
- 3** OVERVIEW OF THE DRUG LAWS AND LEGISLATIONS
- 4** SUPPLY REDUCTION:
WELL-BALANCED APPROACH
- 5** DEMAND REDUCTION :
PREVENTION, TREATMENT & REHABILITATION
- 6** WAY FORWARD
- 7** CONCLUSION

INTRODUCTION



It is estimated that a total of 246 million people, or 1 out of 20 people between the ages of 15 and 64 years, used an illicit drug in 2013

DRUG USE

FIG. 1. Global trends in the estimated number of drug users, 2006-2013

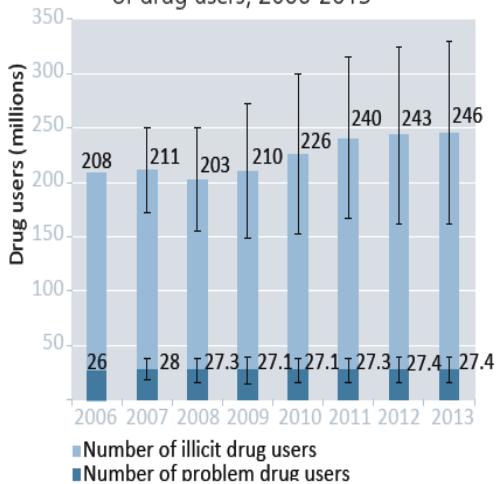


FIG. 2. Global trends in the estimated prevalence of drug use, 2006-2013

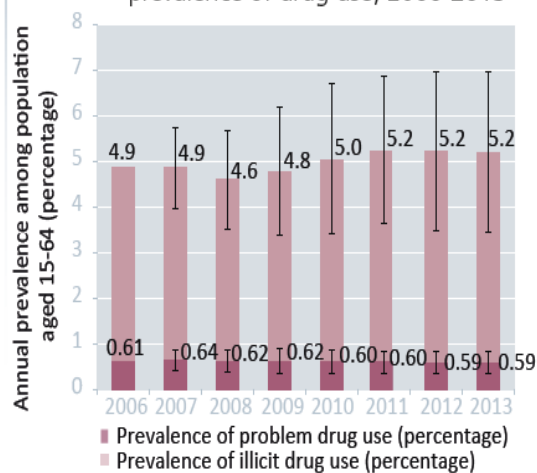
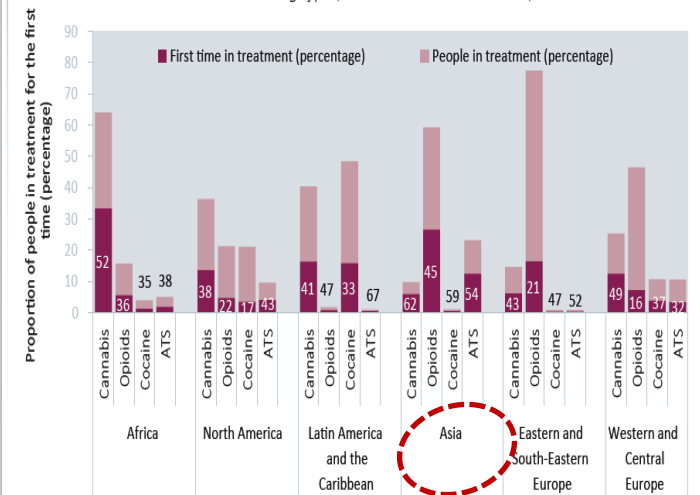


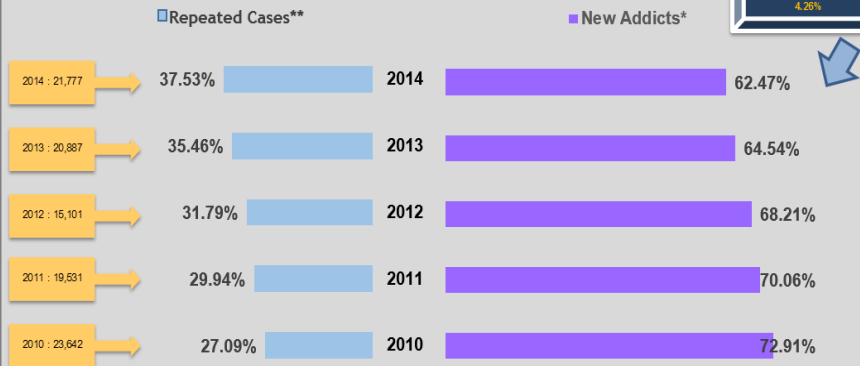
FIG. 4. Percentage distribution of people in treatment, by primary drug type, by region and share of first-time entrants for each drug type (2013 or latest available data)



MALAYSIAN EXPERIENCE

MALAYSIA DRUGS SITUATION

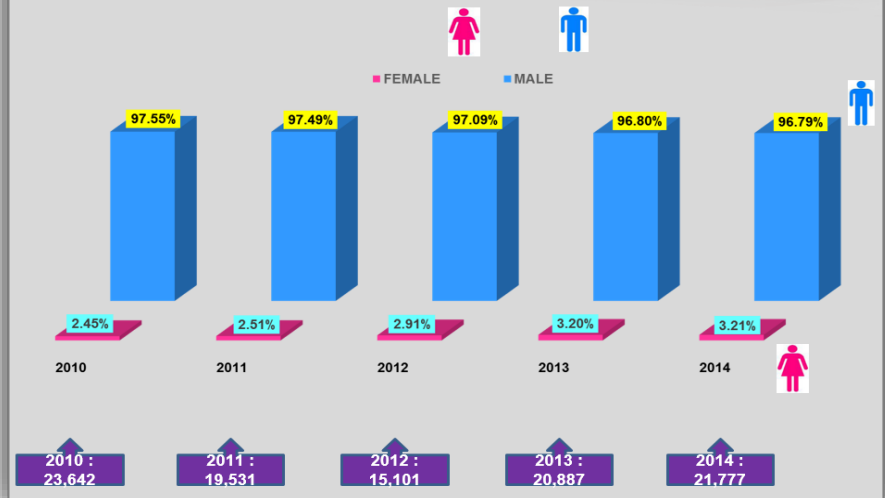
DRUG ADDICTION BY CASES, 2010-2014



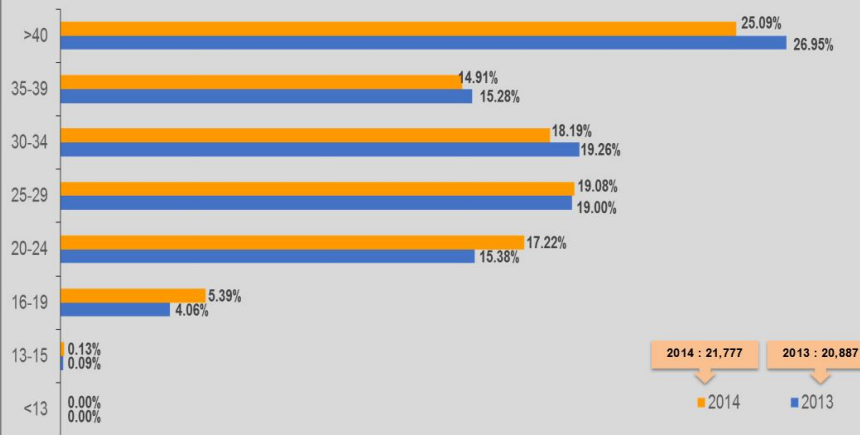
The Percentage of total number of drug addicts detected between 2013 & 2014 increased by 4.26%

Note:
* Addicts detected for the first time by the NADA System
** Addicts previously detected by the NADA System

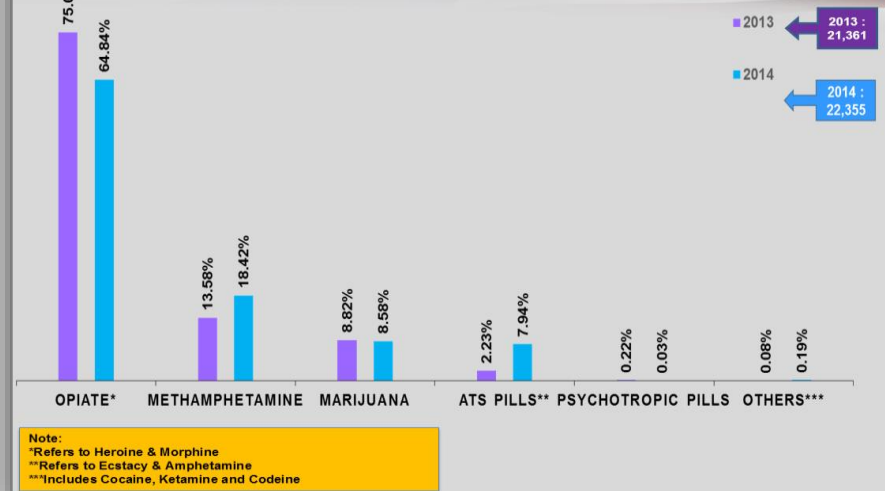
DRUG ADDICTION BY GENDER, 2010-2014



DRUG ADDICTION BY AGE, 2013 & 2014



TYPES OF DRUG USED, 2013 & 2014



Note:
*Refers to Heroine & Morphine
**Refers to Ecstasy & Amphetamine
***Includes Cocaine, Ketamine and Codeine

CHALLENGES

TEENAGER/ CHILDREN DRUG ABUSER



STIGMATIZATION : COMMUNITY, EMPLOYEE, FAMILY

WOMAN DRUG ABUSER



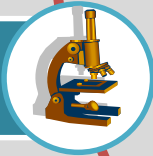
NO SPECIFIC TREATMENT FOR ATS ABUSER

DRUG SUPPLY



HARDCORE DRUG ABUSER

PRECURSOR



TRANSMISSION OF INFECTIOUS DISEASES

EMERGENCE OF NEW DRUG



MONETARY/ BUDGETARY



Increase of Chronic Relapsing Disease



Poly-Drug Users



Lack of involvement from Family and Community



Increase of street crime



OVERVIEW OF THE DRUG LAWS AND LEGISLATIONS

**The
Dangerous
Drugs Act
1952**

**The
Poisons
Act 1952**

**The Drug
Dependants
(Treatment
and Rehabili-
tation) Act
1983**

**The
Dangerous
Drugs
(Special
Preventive
Measures)
Act 1985**

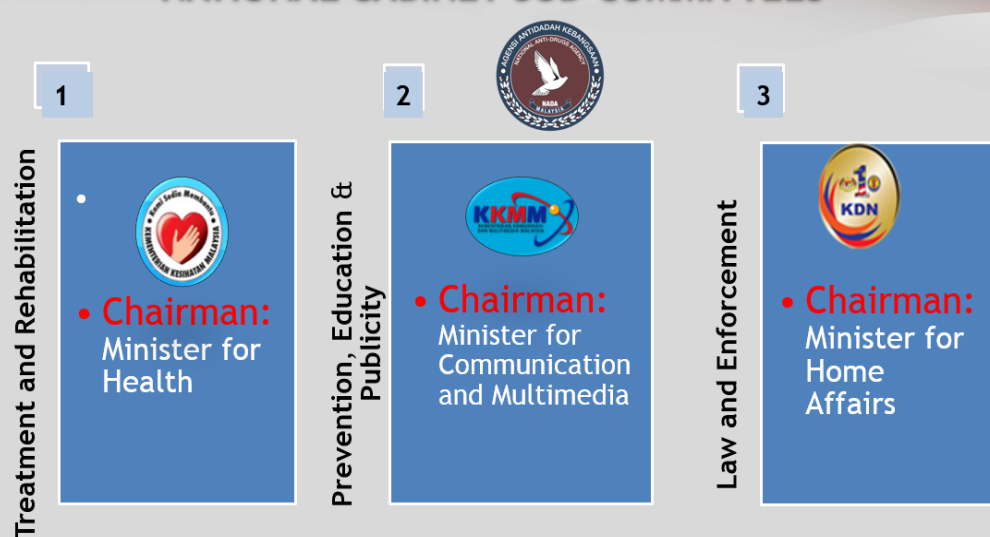
**The
Dangerous
Drugs
(Forfeiture
of Property)
Act 1988**

**The
National
Anti-
Drugs Act
2004**

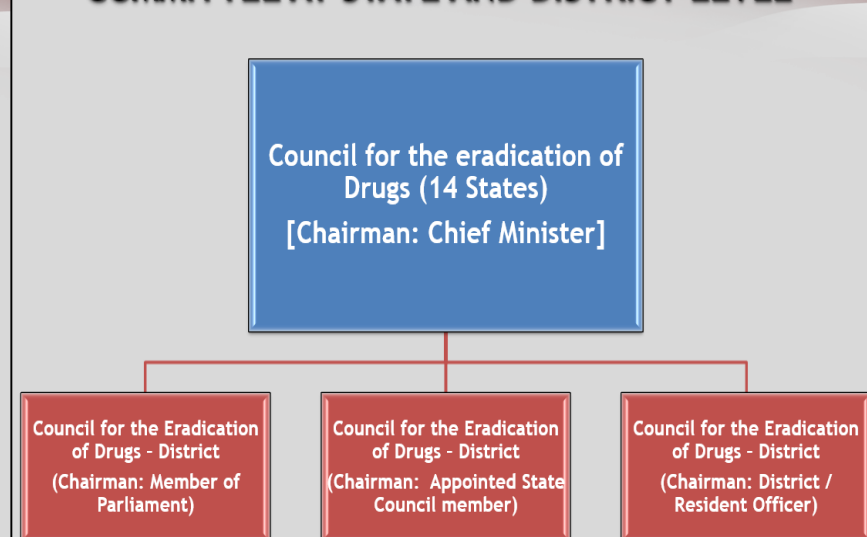
MECHANISM

- Anti Drug policy is decided by Cabinet Committee at National level, supported by three sub-committees and Council at State and District levels
- At National level, there is the National Committee on the Eradication of Drugs (JKMD) chaired by the Deputy Prime Minister
- JKMD formulate policies pertaining to Drug Prevention & Education; Treatment and Rehabilitation and Law and Enforcement

NATIONAL CABINET SUB-COMMITTEES



COMMITTEE AT STATE AND DISTRICT LEVEL





SUPPLY REDUCTION
WELL-BALANCED APPROACH
Between Supply and Demand Reduction



**SUPPLY
REDUCTION**

The diagram features two large, white, stylized arrows with blue outlines. The left arrow points to the left and contains the text 'SUPPLY REDUCTION' in red. The right arrow points to the right and contains the text 'DEMAND REDUCTION' in black. The two arrows are connected at their inner ends by a horizontal line that has a slight curve, resembling a ribbon or a bridge, symbolizing a balanced approach between the two concepts.

**DEMAND
REDUCTION**



SUPPLY REDUCTION: ISSUES & INITIATIVES

ROYAL MALAYSIA POLICE

DEPARTMENT OF CHEMISTRY MALAYSIA (DOCM)

STING

**Identification and
Quantization of Drugs and
Precursors**

**PHARMACEUTICAL SERVICES
DIVISION OF THE MINISTRY
OF HEALTH, MALAYSIA**

**System to control substances
such as narcotics,
psychotropic substances for
medical treatment and
industrial purposes**



DEMAND REDUCTION

ENFORCEMENT

Combating drug through law enforcement:

- To eradicate demand; and
- To eradicate supply

PREVENTION

- Early Prevention starts from primary school
- Education and intervention for risk group
- Intervention for initial user



STRATEGY

TREATMENT & REHABILITATION

- Treatment and rehabilitation for drug abuser
- To prevent recidivism
- Remain abstinence
- To bring back clients social function

PREVENTIVE MEASURES

STRATEGY

AIMS

VOLUNTEERISM

PREVENTIVE
EDUCATION

PUBLIC
AWARENESS

1MALAYSIA
SQUAD



- FAMILY
- LEARNING INSTITUTION
- WORKPLACE
- COMMUNITY

- COMPREHENSIVE MEDIA PLAN
- FACE TO FACE PROMOTIONS / BROCHURES / FLYERS / ENGAGEMENT ITEMS

Eliminate the demand and supply of drugs in order to create:

DRUG-FREE
FAMILY

DRUG -FREE
LEARNING
INSTITUTION

DRUG
-FREE
WORKPLACE

DRUG-FREE
COMMUNITY



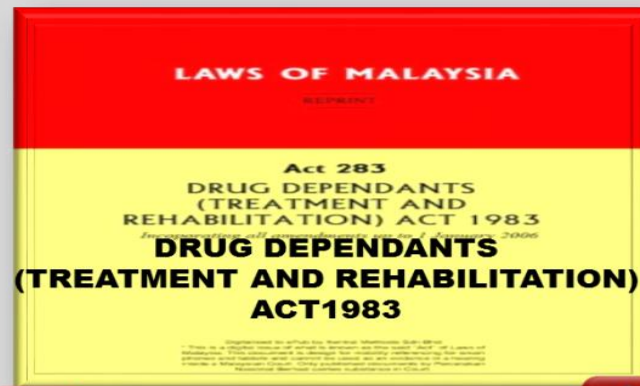
***FOCUSED* PREVENTION PROGRAM**

OBJECTIVES OF NEW APPROACH :



TREATMENTS & REHABILITATION PROGRAMS

NADA has strengthened treatment and rehabilitation programs through the holistic approach by combining the psychosocial elements, therapeutic community (TC) and spiritual approach both in the residential/ in-house or in-community treatment programs



INSTITUTIONALIZED TREATMENT



TREATMENT IN COMMUNITY



VISION

To bring back drug abuser as functional individual

MISION

To provide a holistic treatment and rehabilitation services

FUNCTION

- 01** Planning and coordinating the implementation of treatment and rehabilitation in institution and community
- 02** Observe and evaluate the effectiveness of implemented treatment and rehabilitation program in institution and community
- 03** Improvise on the treatment and rehabilitation program to ensure the achievement of the policy set by the agency

OBJECTIVE

- 01** To give treatment and rehabilitation to individual who involved in drug abuse;
- 02** To ensure individual who involved in drug abuse remain abstinence;
- 03** To change individual who involved in drug abuse back to lifestyle without drugs;
- 04** To improve health status and reduce health risks for individual who involved in drug abuse
- 05** To improve the social status and reintegration of the individual to be able to become productive and functioning in the family, workplace and community.

INSTITUTIONALIZED SETTINGS



- 1) Compulsory Treatment & Admission through the Law
- 2) Treatment-based services only
- 3) Treatment for opiate-based addicts - males, females and adolescent are separated
- 4) Treatment Duration - 2 years
- 5) Capacity for residents in 22 CCRC - 6,660



- 1) Open Access Services, Free of Charges, Voluntarism, SUD's as Patients
- 2) Focus on medical, psychiatric & clinical treatment
- 3) Treatment for all substance abusers (opiate, ATS, inhalant) - males, females & adolescent are separated
- 4) Treatment duration - 1 to 12 months
- 5) Capacity for residents in 10 C&C Clinics - 3,000



INSTITUTIONALIZED PROGRAM

1

PSYCHOSOCIAL

- Therapeutic Community [TC]
- Early Recovery
- Relapse Prevention
- Social Support
- Counseling and Guidance
- Family Development
- Religious and Spiritual Program
 - ❖ Halaqah
 - ❖ Inabah
 - ❖ Morale
- Self Management
- Outing / Excursion
- Sports and Recreation

2

HEALTH AND MEDICAL TREATMENTS

- Medical Detoxification
- Harm reduction - Medical Assisted Therapy (MAT)
- Psychiatric Treatment
- HIV/HEP/TB/STI Treatment
- Immunization
- Infected Diseases Screening
- TB Prevention Treatment

3

VOCATIONAL TRAINING

- Skill Training [handcraft, small industry, bakery, gardening etc]
- Certified Skill Training [short -term course]

CLIENT'S ACTIVITIES

PSYCHOSOCIAL PROGRAM



Relapse Prevention



SPRITUAL PROGRAM



SPORT & RECREATIONAL



VOCATIONAL TRAINING



SCHOOL/EDUCATIONAL PROGRAM

Outpatient



CCSC

CCH



NIGHT SHELTER



COMMUNITY-BASED SERVICES



JKPD



CIC



TransCC





COMMUNITY-BASED SERVICES

CONCEPT

- * Open Access Service - Walk-In
- * Daycare
- * Residential (CCSC)
- * Non-Residential

ADMISSION

- * Section 6(1)(a) and 6(1)(b) Drug Dependents Act (Treatment and Rehabilitation) 1983 (People Under Supervision)
- * Voluntary Clients
- * Outreach by NADAs Officer's or NGOs

PROGRAM

- * Psychosocial Programme (Matrix Module)
- * Referral & advocacy
- * Medical Treatment
- * Medical Assisted Therapy (MAT)
- * Vocational Training
- * 12 Steps Training
- * Spiritual
- * Family Support
- * Peers Support Group
- * Social integration

CLIENT'S ACTIVITIES

PSYCHOSOCIAL PROGRAM



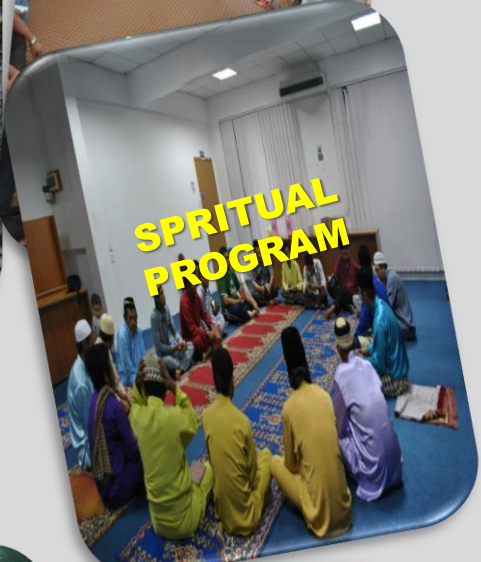
**SOSIAL
SUPPORT
GROUP**



**OUTING
& EXCURSION**



**SPRITUAL
PROGRAM**



HOME VISIT



**SPORT &
RECREATIONAL**



**COMMUNITY
ACTIVITY**



CLIENT'S INTEGRATION CENTRE

A platform for clients from CCRC to enhance and practice their coping skill gained in the institution and integrate with community prior to their completion of compulsory treatment and rehabilitation programs



MOBILE CARING SERVICES



FOCUS GROUP

SUD's and high risk group.

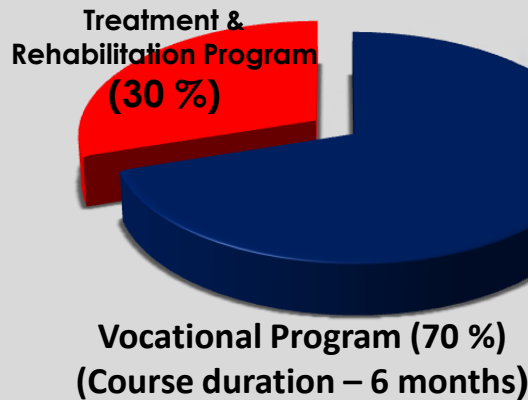
OPERATED LOCATION

Rural areas, in the city outskirts, government-plan development areas and joint venture programmes

SERVICES

Clinical screening for SUD's, counselling session, monthly session, home visit and prevention programme

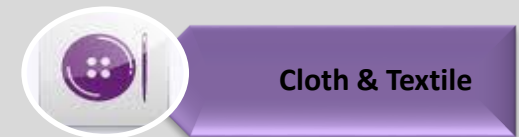
VOCATIONAL TRAINING



SMART PARTNERS :

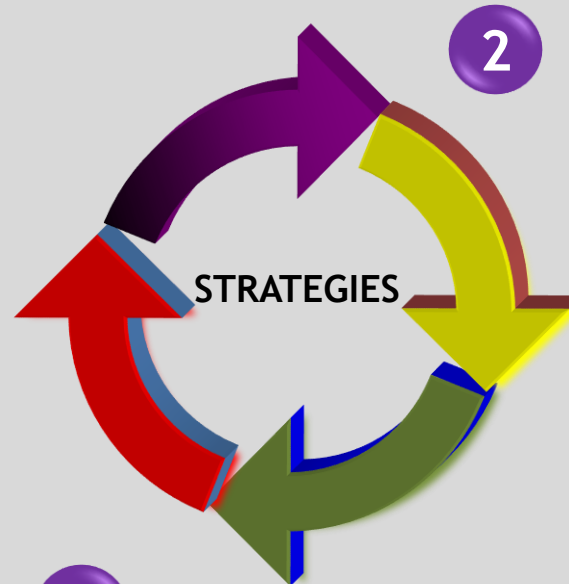
1. MINISTRY OF HUMAN RESOURCE
2. MINISTRY OF AGRICULTURE
3. MARA
4. COMMUNITY COLLEGE
5. CIDB
6. IKBN
7. FAMA

TRAINING PROVIDED AT CCVC & CCRC:



ENFORCEMENT

1 INTERCEPTION
Drug addict
detection and
arrest for
treatment &
rehabilitation



2 CONTAINMENT

- Treatment & rehabilitation
- Managing individual under supervision (IUS)

3 PROSECUTION

↓

Security of the institutions

→ Legal action against individual under supervision (IUS) breach of provision.



OBJECTIVE

Detection and arrest drug addicts through law for treatment and rehabilitation.

Detection and legal action against individual under supervision (IUS) for breach of provision.

Maintaining public security and safety.

Action against drug addiction and drug abuse received through public complaints.

1

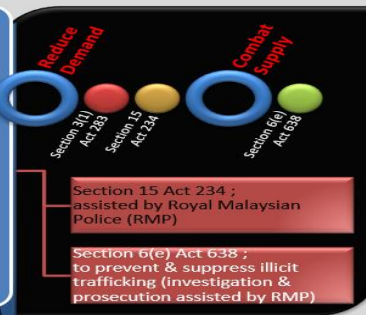
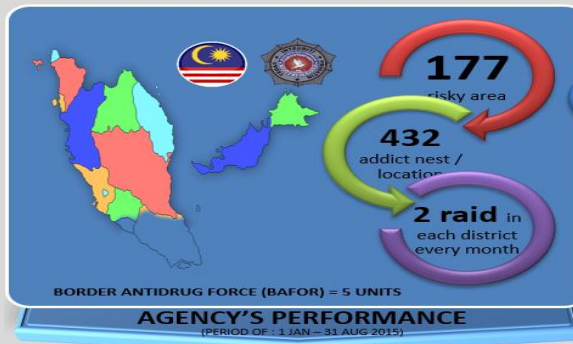
DRUG ADDICT DETECTION AND ARREST

FUNCTION

ENFORCE AND PERFORM SECTION 3(1) DRUG DEPENDANTS ACT (TREATMENT AND REHABILITATION) 1983 TO IDENTIFY AND ARREST DRUG ADDICTS.



INTERCEPTION



Detained & Contain (Institutionalized)

Obtaining Court Order

Pathology Lab Addict Verification

Urine Screening

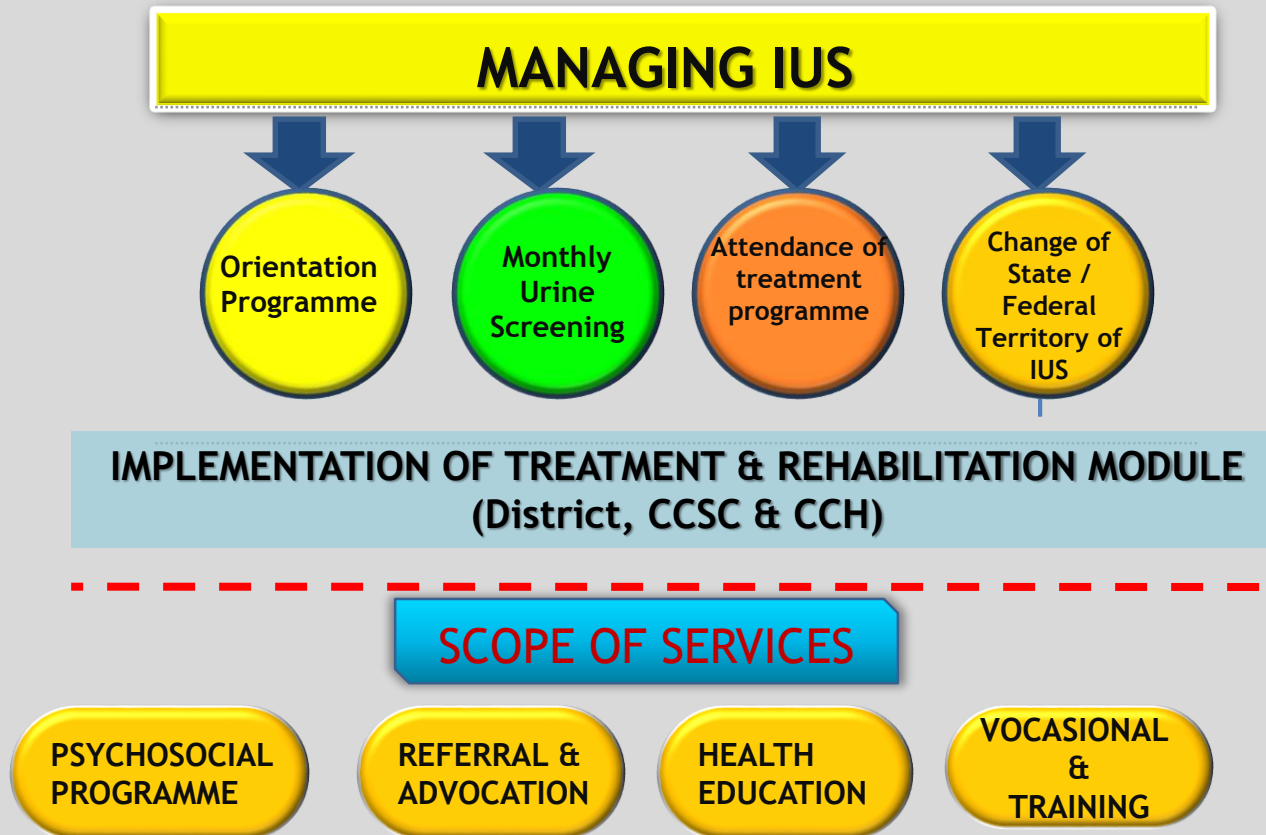
1,833
ANTIDRUG RAID NATIONWIDE

20,041
Suspect arrested

7,431
addicts detained

2

MANAGING INDIVIDUAL UNDER SUPERVISION (IUS)



PROSECUTION

AGENCY'S LEGAL ACTION ABILITIES :

413
Investigation
Officers

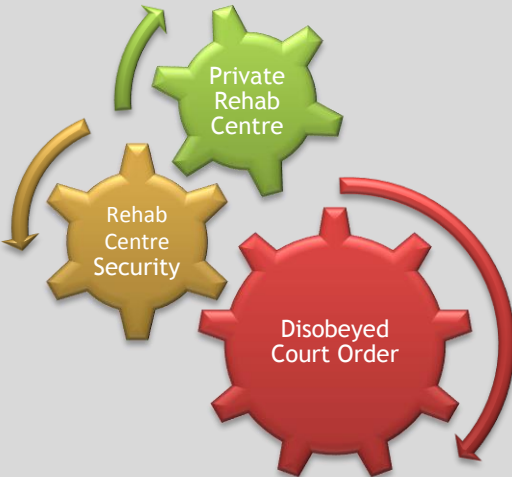
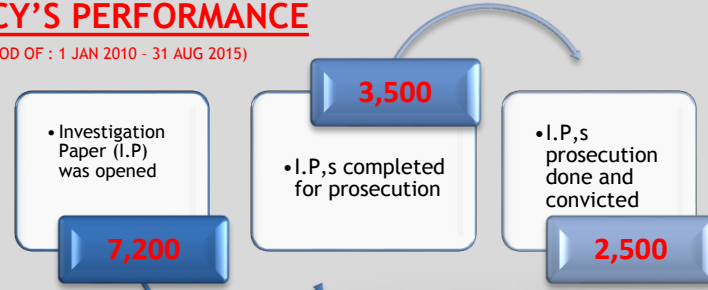
90
Prosecution
Officers
(appointed by
Deputy Public
Prosecutor)

104
district
offices
nationwide



AGENCY'S PERFORMANCE

(PERIOD OF : 1 JAN 2010 - 31 AUG 2015)



LAW ENFORCED

Section 6 (3) Act 283

- ❑ Under supervision addict who disobeyed Court Order

Section 16 (4) Act 283

- ❑ Private Rehab Centre that running against the rules stated by the law

Section 19 (3) Act 283

- ❑ Any person who escape from lawful custody (institutionalized)

Section 20 Act 283

- ❑ Commit breach or contravenes any term/condition lawfully imposed to rehab centre



WAY FORWARD

NIGHT SHELTER

- Recovering persons who do not have a place to stay at night are also welcomed here in an effort to help them regain their lives again

BAITUL ISLAH

- A residential service center for Muslim HIV/Aids patients with history of drug addiction

OUTSOURCING PROGRAM

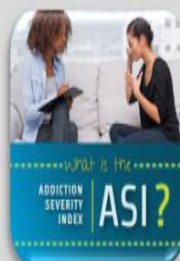
- Outsourcing on the treatment and rehabilitation program to NGO handling

ONE STOP CENTRE FOR ADDICTION

- Collaboration with Ministry of Health in providing a comprehensive facility for the treatment and rehabilitation (continuum of care) for SUD's

EVIDENCE-BASED TOOLS

- Adapt and adopt an Addiction Severity Index (ASI) tools using Malaysia language for clients in institution and community



CONCLUSION

Improving the machinery to combat the threat of drug

Close inter-agency cooperation

Strengthening cooperation with the neighboring countries;

Supporting the social reintegration program'



THANK YOU
www.adk.gov.my

